

# NS14A/NS27A/NS35A

---

## INSTALLATION/OWNER'S MANUAL

# NavAtlas™

# NavAtlas™ NS14A/NS27A/NS35A INSTALLATION

## Preparation/Installation

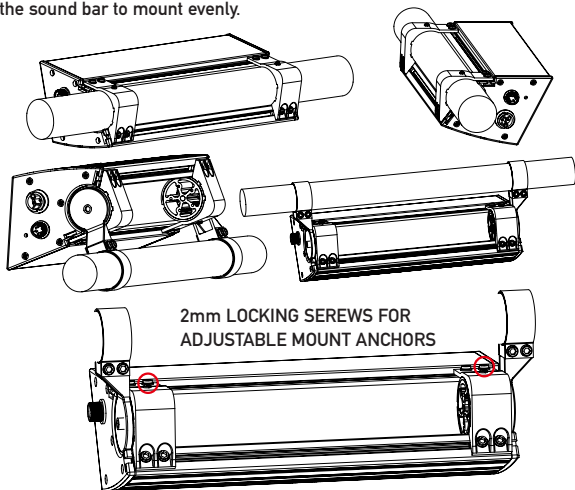
Please read entire manual before installation.

### Before You Start

- Disconnect negative battery terminal. Consult a qualified technician for instructions.
- Use extreme caution when drilling holes to avoid damaging fuel lines, hydraulic lines or existing wiring.
- If additional wiring is required, we recommend that you run all wires prior to mounting your speaker in place.
- Use the highest quality connectors for a reliable installation and to minimize signal and power loss.
- Avoid running wires over, near, or through sharp edged surfaces. We suggest you also use rubber grommets to protect any wires routed through metal.

### Mounting and Installation

- Determine where the sound bar will be mounted. Ensure an area large enough for the sound bar to mount evenly.



## Preparation/Installation

Please read entire manual before installation.

### Before You Start

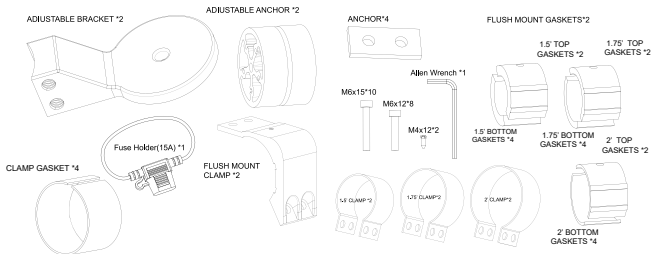
- Disconnect negative battery terminal. Consult a qualified technician for instructions.
- Use extreme caution when drilling holes to avoid damaging fuel lines, hydraulic lines or existing wiring.
- If additional wiring is required, we recommend that you run all wires prior to mounting your speaker in place.
- Use the highest quality connectors for a reliable installation and to minimize signal and power loss.
- Avoid running wires over, near, or through sharp edged surfaces. We suggest you also use rubber grommets to protect any wires routed through metal.

### Mounting and Installation

- Determine where the sound bar will be mounted. Ensure an area large enough for the sound bar to mount evenly.

#### Part List

8x 5mm x 12mm Allen screws (Flush Mount Anchors)	2X Adjustable Brackets
8x 5mm x 15mm Allen screws (Adjustable Brackets)	2X Adjustable Anchors
2x 5mm x 15mm Allen screws (Adjustable Anchors)	2X 1.5" Bar Clamps
2x 2mm Allen screws (Adjustable Anchor Lock)	2X 1.75" Bar Clamps
2X Flush Mount Clamps	2X 2" Bar Clamps
4X Flush Mount Anchors	1 X Fuse Holder
Gaskets(Bar Mount & Flush Mount)	1 X Allen Tool



# NavAtlas™ NS14A/NS27A/NS35A INSTALLATION

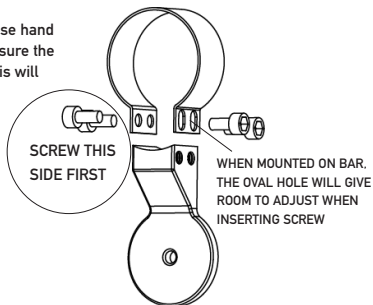
## Preparation/Installation

When mounting the sound bar using the adjustable mount, please be sure to use the appropriate size clamp for your bar size. Please use only the supplied screws to fasten clamp

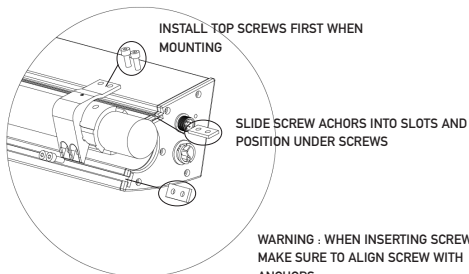
**WARNING :** When inserting screws please hand tighten first before fastening and make sure the screw is straight and not at an angle, this will damage the screw thread of the mount.



PLEASE CUT CLAMP  
GASKET TO DESIRED  
SIZE WHEN MOUNTING



When using the flush mount brackets, please be sure to use the supplied screws when installing. Select the appropriate gaskets for your bar size, you can mix and match the gaskets if the bar size is slightly smaller or bigger



**WARNING :** WHEN INSERTING SCREWS,  
MAKE SURE TO ALIGN SCREW WITH  
ANCHORS

## Connection Descriptions

### NOTE:

Be sure to follow specific instructions included with your product. The information below should be used as a general guide only.

### RED Power wire (12V+)

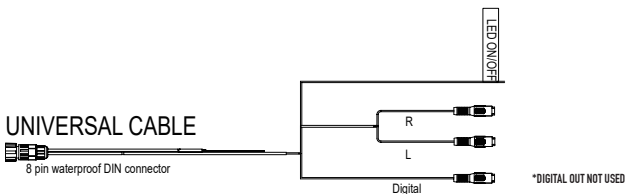
- Disconnect negative battery terminal before proceeding. Consult a qualified technician for instructions if you are unsure.
- Plan wire routing before cutting any wires to length. Use a grommet when running wires through the firewall or metal openings.
- Use extreme caution when drilling holes to avoid damaging fuel lines or existing vehicle wiring.
- The +12V wire must be fused within 18" from the battery for protection of the vehicle's electrical system.

### BLACK Ground wire (GND)

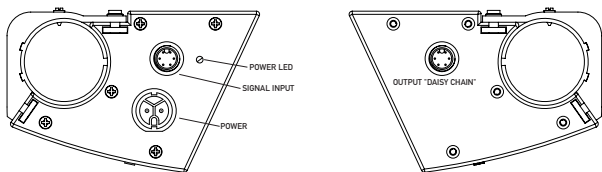
- Choose a clean unpainted section of metal or the vehicle chassis when attaching the ground wire. Be sure to clean the area of any dirt or grease.

### UNIVERSAL DIN CABLE (INCLUDED)

- BLUE LED wire (12V+) - Turns LED ON/OFF
- WHITE/RED RCA - Left/Right audio inputs
- GREY RCA - DIGITAL COAXIAL HI-DEF INPUT (DO NOT CONNECT TO ANALOG AUDIO SOURCE)

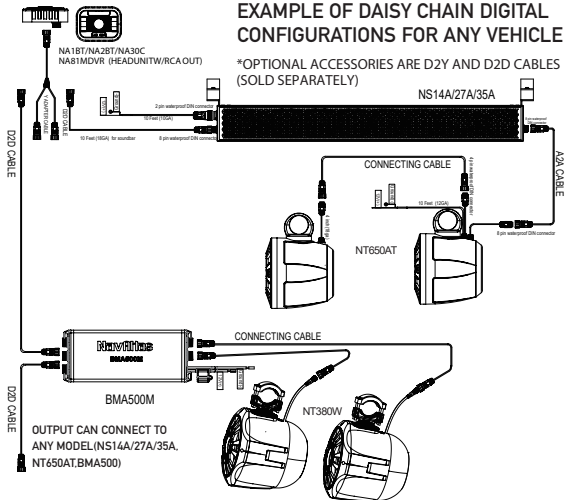


# NavAtlas™ NS14A/NS27A/NS35A INSTALLATION



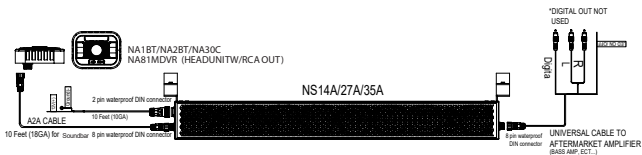
## EXAMPLE OF DAISY CHAIN DIGITAL CONFIGURATIONS FOR ANY VEHICLE

\*OPTIONAL ACCESSORIES ARE D2Y AND D2D CABLES (SOLD SEPARATELY)



## DAISY CHAIN SETUP USING AFTERMARKET AMPLIFIER

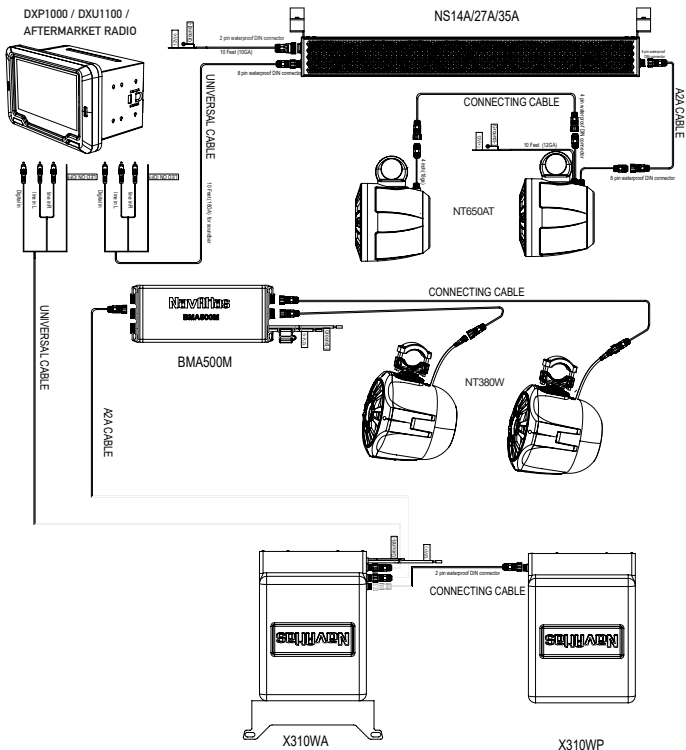
WHEN USING AFTERMARKET AMPLIFIERS WITH SOUNDBARS, YOU MUST USE ANALOG CABLES FOR DASIY CHAIN FUNCTION TO WORK. A2A CABLE(SOLD SEPARATELY) IS REQUIRED FOR ANALOG AUDIO OUTPUT TO WORK IN THIS SETUP.



# NS14A/NS27A/NS35A INSTALLATION NavAtlas™

## DAISY CHAIN SETUP USING ANALOG SIGNAL

WHEN USING ANALOG RCA FROM A RADIO, THE A2A CABLE(SOLD SEPARATELY) IS REQUIRED FOR DAISY CHAIN FUNCTION TO WORK.



## Limited One Year Warranty

This warranty gives you specific legal rights. You may also have other rights which vary from state to state.

NavAtlas warrants this product to the original purchaser to be free from defects in material and workmanship for a period of one year from the date of the original purchase.

NavAtlas agrees, at our option, during the warranty period, to repair any defect in material or workmanship or to furnish an equal new, renewed or comparable product (whichever is deemed necessary) in exchange without charges, subject to verification of the defect or malfunction and proof of the date of purchase. Subsequent replacement products are warranted for the balance of the original warranty period.

**Who is covered?** This warranty is extended to the original retail purchaser for products purchased from an authorized NavAtlas dealer and used in the U.S.A

**What is covered?** This warranty covers all defects in material and workmanship in this product. The following are not covered: software, installation/removal costs, damage resulting from accident, misuse, abuse, neglect, product modification, improper installation, incorrect line voltage, unauthorized repair or failure to follow instructions supplied with the product, or damage occurring during return shipment of the product.

**Factory defects include:**

- MID/Tweeter not playing or distorting
- Glue/adhesive separating or not holding correctly
- Tinsel leads not attached/soldered correctly
- LED not working out-of-box

**What to do?**

1. Before you call for service, check the troubleshooting guide in your owner's manual. A slight adjustment of any custom controls may save you a service call.
2. If you require service during the warranty period, you must carefully pack the product (preferably in the original package) and ship it by prepaid transportation with a copy of the original receipt from the retailer to an authorized service center.
3. Please describe your problem in writing and include your name, a return UPS shipping address (P.O. Box not acceptable), and a daytime phone number with your shipment.
4. For more information and for the location of the nearest authorized service center please contact us by one of the following methods:
  - Call us 1-562-946-7471
  - E-mail us at [navcustserv@navatlas.net](mailto:navcustserv@navatlas.net)

**Exclusion of Certain Damages:** This warranty is exclusive and in lieu of any and all other warranties, expressed or implied, including without limitation the implied warranties of merchantability and fitness for a particular purpose and any obligation, liability, right, claim or remedy in contract or tort, whether or not arising from the company's negligence, actual or imputed. No person or representative is authorized to assume for the company any other liability in connection with the sale of this product. In no event shall the company be liable for indirect, incidental or consequential damages.

---

**EXCHANGE ONLY ON FACTORY DEFECTS, PHYSICAL DAMAGE IS NOT COVERED BY WARRANTY.**

---



**Specifications**

**NS14A/NS27A/NS35A**

	<b>14"</b>	<b>27"</b>	<b>35"</b>
<b>size</b>	14"	27"	35"
<b>type</b>	Aluminum	Aluminum	Aluminum
<b>Driver</b>	3.5" 2pcs	3.5" 6pcs	3.5" 8pcs
<b>Voice coil</b>	0.75"	0.75"	0.75"
<b>Cone</b>	Aluminum	Aluminum	Aluminum
<b>Surround</b>	Rubber surround	Rubber surround	Rubber surround
<b>Dust cap</b>	Aluminum	Aluminum	Aluminum
<b>Gasket</b>	EVA	EVA	EVA
<b>Tweeter</b>	0.5" 2pcs	0.5" 4pcs	0.5" 4pcs
<b>X-OVER</b>	HI-6dB/OCT	HI-6dB/OCT	HI-6dB/OCT
<b>Power Handling</b>	100W	200W	200W

Design and specifications subject to change without notice.



# NavAtlas™

Support Line: 1-562-946-7471  
9AM-5PM PST Monday-Friday

[www.navatlas.com](http://www.navatlas.com)

All rights reserved.

NSA0418-V01  
Printed in China